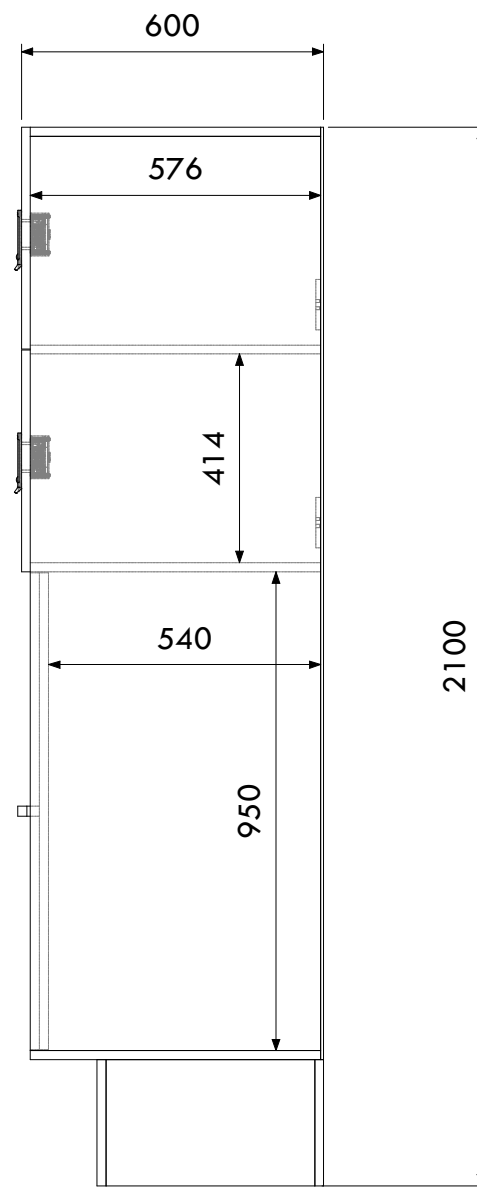
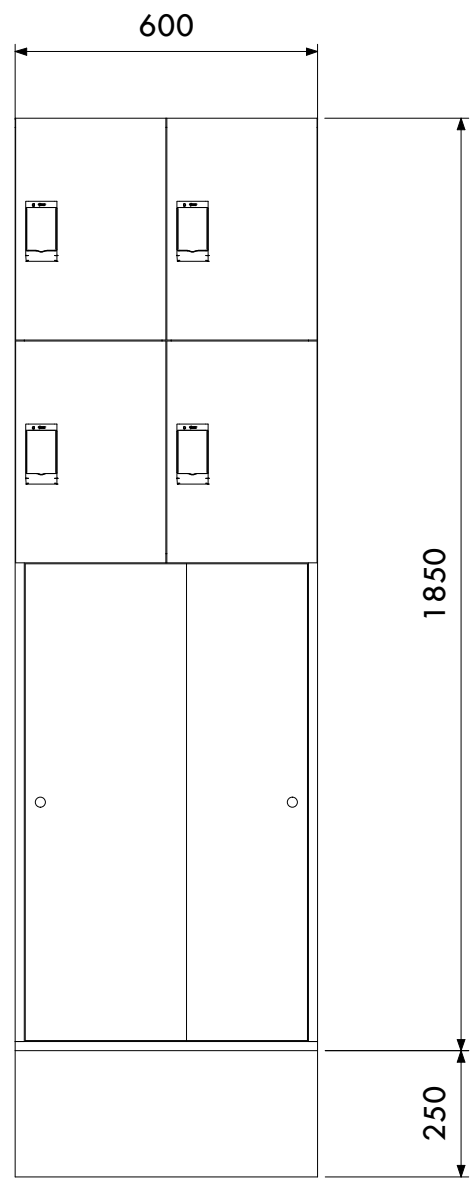
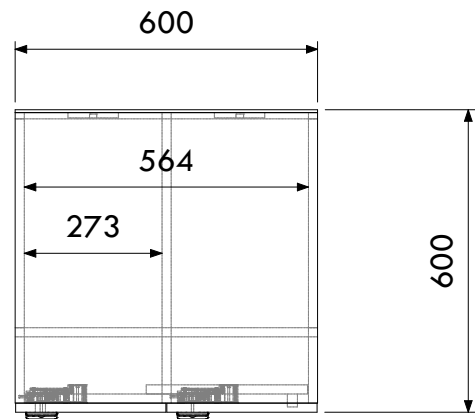


Hackney Locker



NOTES

TOLERANCES
 • LINEAR TOLERANCES ± 0.25MM
 • ANGULAR TOLERANCES ± 0.5°
 ALL DIMENSIONS IN MM UNLESS STATED
 THIS DRAWING IS CONFIDENTIAL AND IS THE PROPERTY OF THE BIKE STORAGE COMPANY
 IT MUST NOT BE COPIED OR DISCLOSED TO A THIRD PARTY WITHOUT PERMISSION.
 THE BIKE STORAGE COMPANY, MARINA STUDIOS, HARBOUR YARD, LONDON, SW10 0XD
 HELLO@THEBIKESTORAGECOMPANY.CO.UK



THE BIKE STORAGE COMPANY
 0800 246 1723

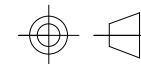
CREATED BY
W Martin

CREATION DATE
19/08/2022

REVISION
00

TITLE
TBSC_Hackney_Lockers_DR_00-1

SCALE
1 : 15



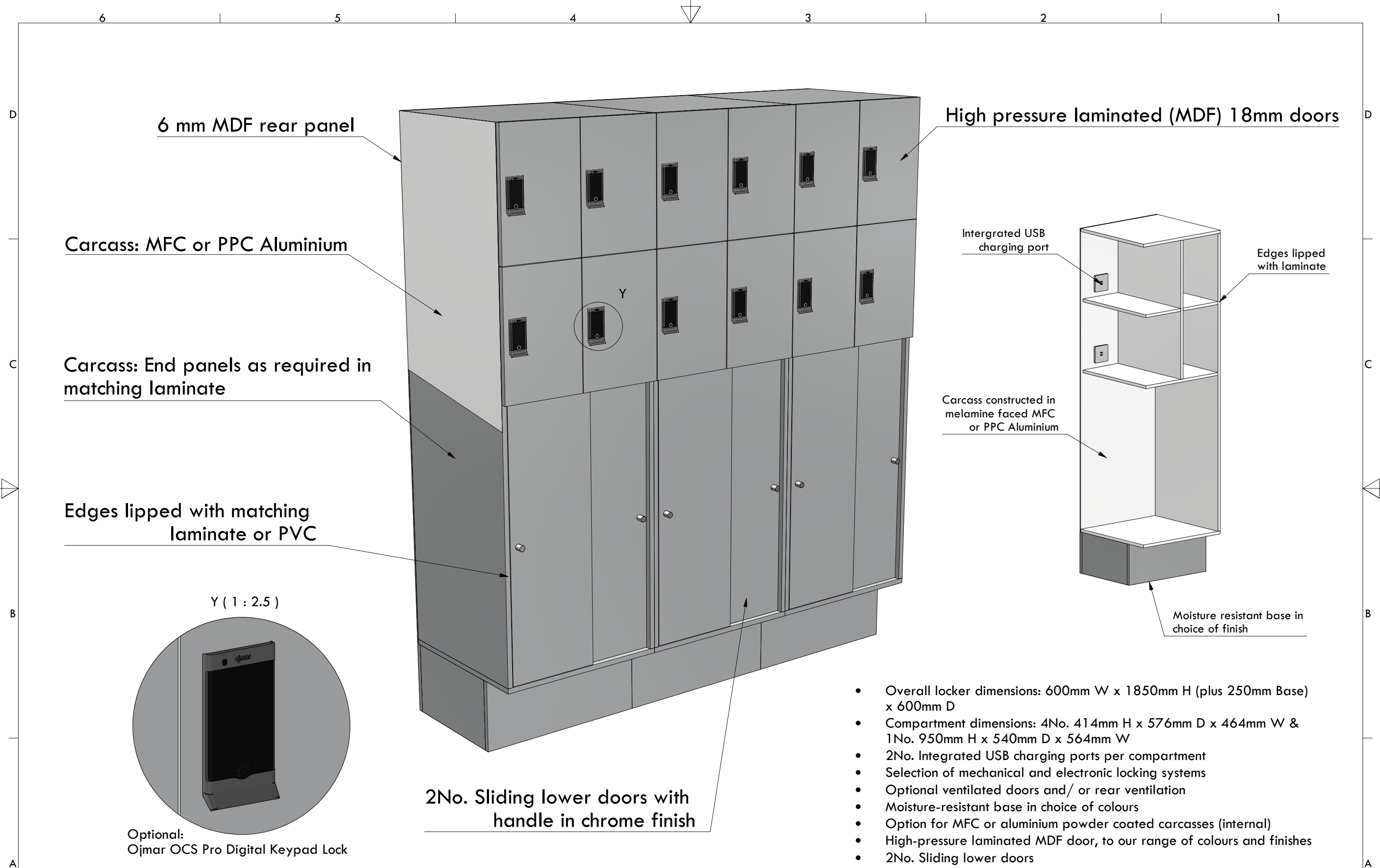
THIRD ANGLE PROJECTION

PROJECT

CLIENT
The Bike Storage Company

STATUS
Information

SHEET
1
SHEET SIZE
A3



- Overall locker dimensions: 600mm W x 1850mm H (plus 250mm Base) x 600mm D
- Compartment dimensions: 4No. 414mm H x 576mm D x 464mm W & 1No. 950mm H x 540mm D x 564mm W
- 2No. Integrated USB charging ports per compartment
- Selection of mechanical and electronic locking systems
- Optional ventilated doors and/ or rear ventilation
- Moisture-resistant base in choice of colours
- Option for MFC or aluminium powder coated carcasses (internal)
- High-pressure laminated MDF door, to our range of colours and finishes
- 2No. Sliding lower doors

NOTES	TOLERANCES • LINEAR TOLERANCES ± 0.25MM • ANGULAR TOLERANCES ± 0.5° ALL DIMENSIONS IN MM UNLESS STATED	CREATED BY W Martin	CREATION DATE 19/08/2022	REVISION 00	TITLE TBSC_Hackney_Lockers_DR_00-1	SCALE 1 : 13
	THIS DRAWING IS CONFIDENTIAL AND IS THE PROPERTY OF THE BIKE STORAGE COMPANY. IT MUST NOT BE COPIED OR DISCLOSED TO A THIRD PARTY WITHOUT PERMISSION. THE BIKE STORAGE COMPANY, MARINA STUDIOS, HARBOUR YARD, LONDON, SW10 0XD HELLO@THEBIKESTORAGECOMPANY.CO.UK	THE BIKE STORAGE COMPANY 0800 246 1723		THIRD ANGLE PROJECTION		SHEET 1
		CLIENT The Bike Storage Company	STATUS Information		SHEET SIZE A3	